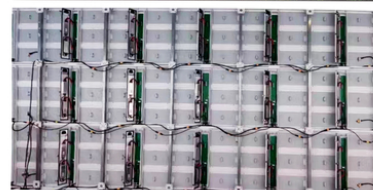


Full Front Maintenance Fixed Outdoor Display Screen For Easy Installation

Our Product Introduction

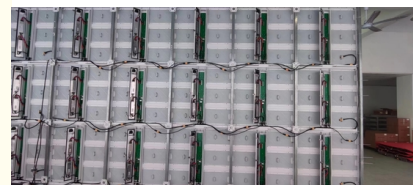
Basic Information

- Place of Origin: Shenzhen, China
- Brand Name: Googol
- Certification: CE,FAD,ROHS
- Model Number: P6.66



Product Specification

- Display Scale: 16.7
- Max.Power Consumption: 680W/m²
- Module Resolution: 72*48 Dot
- Drive Mode: 1/6S
- Environmental: OUTDOOR
- Operating Humidity: 100,000hours
- Highlight: **P6.66 led outdoor display screen,
16.7 led outdoor display screen,
Fixed led screen for outdoor**



Product Description

This outdoor rental LED display product has excellent heat dissipation performance, and it can be maintained in the front and back as well. Its all-weather durability and energy efficient design make it an ideal choice for permanent outdoor installations. The display type of this product is Outdoor Fixed LED Display, which means it is specifically designed for outdoor use and can withstand various weather conditions. It is suitable for a wide range of applications, including outdoor advertising, sports events, concerts, and more.

Applications:

- Outdoor advertising
- Sports events
- Concerts
- Exhibition Hall

Product Features:

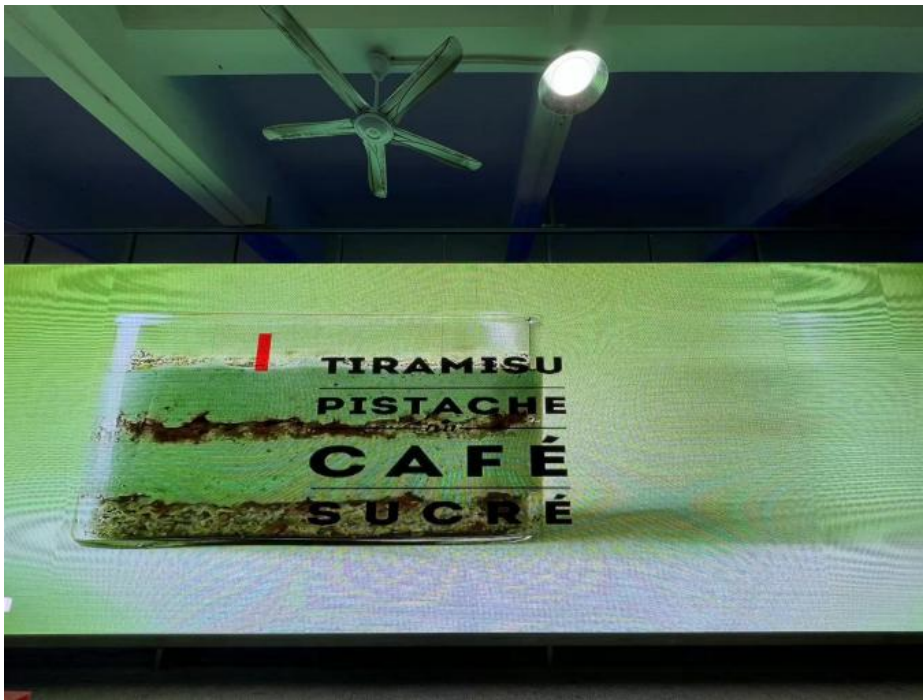
- Adopt full die cast aluminum bottom shell module design, excellent heat dissipation performance, energy saving circuit design, more than 50% energy saving than the traditional outdoor display screen, minimalist structure design, fully bare installation, no air conditioning, front and rear maintenance, reduce installation cost and use cost.
- Using high strength aluminum profile box, tensile and shock resistance, self-heat dissipation, life up to ten years, accurate, fast, flexible positioning installation, can effectively deal with different installation environment
- With the protection level of IP65, no fear of any bad weather, the connector chooses professional aviation plug, quality and safety are guaranteed, high-quality raw materials, mature technology, large-scale production, stable and reliable quality
- The best outdoor SMD three-in-one waterproof and anti-resistant technology in the industry, so that the screen has ultra-wide viewing Angle and better surface flatness and stability, RGB deep gray processing, rich color, exquisite high-definition picture quality, support point by point correction function, to ensure the consistency of color and brightness in the use process.
- High safety-all-aluminum bottom shell, high ignition point, high fire rating, can be passed by TUV mechanism 5VB fire test certification; special design waterproof rubber ring, multi-layer waterproof design, protection grade of IP65
- High stability-all-aluminum material, super high back cooling rib design, high heat dissipation efficiency; partial pressure power supply design, low heat, long service life; hard connection design, high stability
- High performance-innovative circuit design, high brightness efficiency, can achieve ten thousand levels of brightness display
- High convenience-full front maintenance design and full back maintenance design, easy installation, save installation space; thin design, weight to 30 KG / m², thickness to 77mm
- High contrast-innovative design mask, brim height of 2.5mm, improve contrast; mask with high accuracy.

Part Number	P6.66	Part Number	P6.66
Pixel Pitch	6.66mm	Display Scale	16.7M
LED Configuration	SMD2727	Brightness Adjustment	0-100 levels adjustable
Pixel Density	22500dot/m ²	Max.Power Consumption	680W/m ²
Module size	480*320mm	Ave.Power Consumption	240W/m ²
Module Resolution	72*48 dot	Drive Mode	1/6S
Cabinet Size	960*960*77mm	Refresh Frequency	≥3840HZ
Cabinet Resolution	144*144dot	Environmental	OUTDOOR
Cabinet Weight	25kg	Operation Power	AC100~240 50/60HZ

IP Rating (front/back)	IP65	Operating Temperature	-20°C~+50°C
Brightness Intensity	>6500 CD/m2	Operating Humidity	10~95% RH
Viewing Angle (H/V)	140°/140°	Operating Life	100,000hours
View Distance	>8m	Gray Scale	14bit







Shenzhen Googol Display Technology Co., Ltd



+8615766165492



jimmy.wenmy@gmail.com



googolled.com

2nd Floor, Building A, Area 1, Ganghuaxing Industrial Park, No. 2 Chongqing Road, Qiaotou Community, Fuhai Street, Bao'an District, Shenzhen