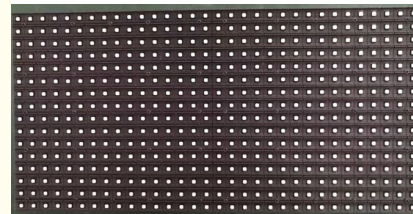


P10 Fixed Outdoor LED Screen Display For All Weather And Energy Efficiency

Our Product Introduction

Basic Information

- Place of Origin: Shenzhen
- Brand Name: Googol
- Certification: CE, FAD, ROHS,
- Model Number: P10



Product Specification

- Pixel Pitch: 10mm
- Module Weight: ≤450g
- Refresh Frequency: ≥3840Hz
- Drive Mode: 1/2S
- Decoding Mode: ICN2012
- Luminance: ≥6000cd/m²
- Highlight: Fixed outdoor led screen display,
High Performance outdoor led screen display,
P10 advertising led display screen



for more products please visit us on googolled.com

Product Description

High-performance Outdoor Fixed LED Display for all-weather and energy efficiency P10

This outdoor Fixed LED display product has excellent heat dissipation performance, and it can be maintained in the front and back as well. Its all-weather durability and energy efficient design make it an ideal choice for permanent outdoor installations. The display type of this product is Outdoor Fixed LED Display, which means it is specifically designed for outdoor use and can withstand various weather conditions. It is suitable for a wide range of applications, including outdoor advertising, sports events, concerts, and Media Fixed Advertising Screens.

Applications:

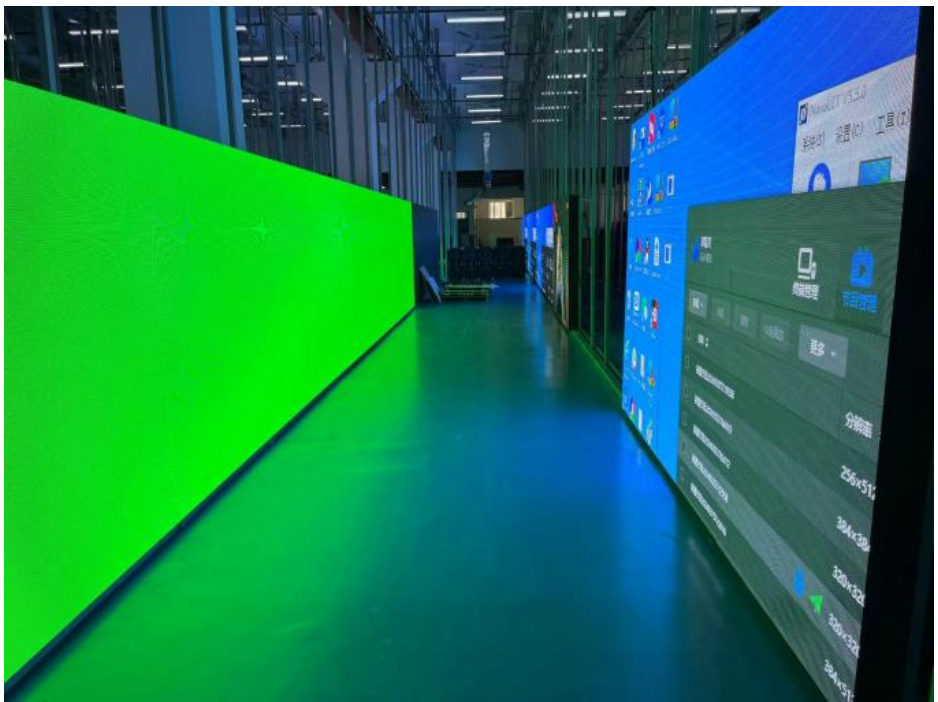
- Outdoor Highway Toll Gate
- Outdoor Advertising Machines
- Media Fixed Advertising Screens

Product Features:

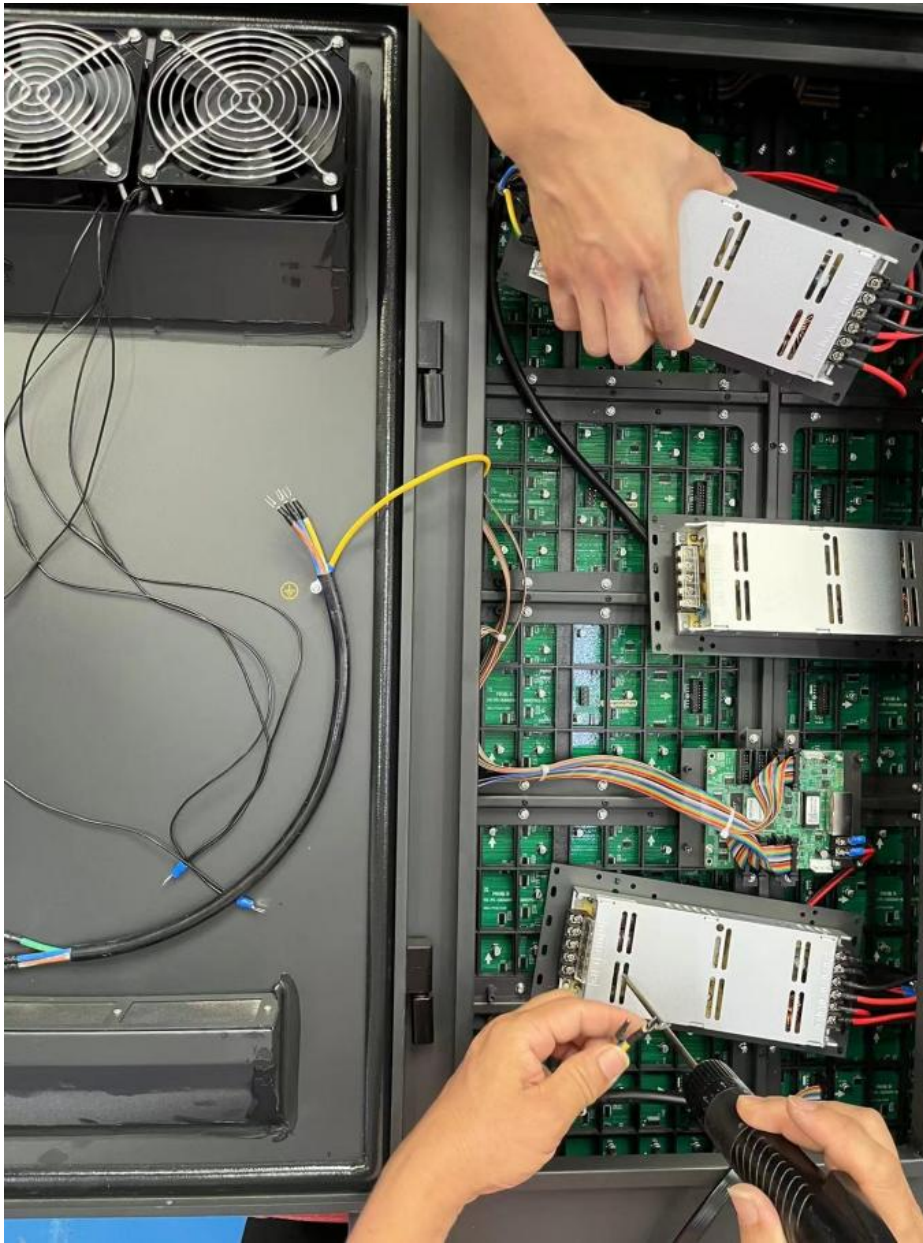
- D-PH10 adopts outdoor full color module PCB board, international FR-4 board, and two layer circuit board design.
- LED lamp beads using Nation Star 2727 gold thread package, white balance brightness ≥ 6000 nit.
- The driver IC adopts ICND2153, and the visual refresh frequency is above ≥ 3840 HZ.
- Module size 320 * 160mm, unique design, compared with the market routine, the flatness is better.
- The module adopts blanking circuit design, built-in LED display screen residual elimination circuit (uplink residual) And lamp bead short circuit, open series bright processing circuit (caterpillar processing phenomenon).

Key Parameters:

Part Number	P10	Part Number	P10
Pixel Pitch	10mm	Module Weight	≤ 450 g
LED Configuration	SMD 2727	Decoding Mode	ICN2012
Pixel Density	10000dot/m ²	Input Voltage(DC)	5V
Module Size	320*160mm	Module Max. Current(Ampere)	≤ 8 A
Pixel Arrangement	32*16	Module Max. Power Consumption	≤ 40 W
Drive Mode	1/2S	Operating Temperature	-20°C~+80°C
Luminance	≥ 6000 cd/m ²	Operating Humidity	10%~85%RH
Driver Chip	ICND2153	Viewing Angle (H/V)	140°(±10°)
Refresh Frequency	≥ 3840 Hz	Viewing Angle (V/V)	120°(±10°)







Packing and Shipping:

Outdoor Fixed LED Display Packaging and Shipping

Our Outdoor Fixed LED Display is carefully packaged to ensure safe delivery to our customers. Packaging.

The display panels are first wrapped in protective foam and then placed in a sturdy wooden crate. The edges of the crate are reinforced with metal corners for added protection during transportation.

Each crate is labeled with the product name, dimensions, and weight for easy identification and handling.

Shipping

We offer both air and sea shipping options for our customers, depending on their location and preference.

For air shipping, we use reliable and well-known carriers to ensure timely and safe delivery. The display panels are carefully loaded into airtight crates and secured with straps to prevent any movement during transit.

For sea shipping, we use specialized containers specifically designed for transportation of delicate electronic equipment. The containers are equipped with shock absorbers and temperature control to protect the display panels from any damage.

Our team carefully monitors the shipping process to ensure that the products arrive at their destination in perfect condition.

Upon arrival, our customers can choose to have the display panels professionally installed by our team or they can opt for self-installation with our detailed installation guide.

With our careful packaging and reliable shipping options, you can trust that your Outdoor Fixed LED Display will arrive safely and ready to impress.



Shenzhen Googol Display Technology Co., Ltd



+8615766165492



jimmy.wenmy@gmail.com



googolled.com

2nd Floor, Building A, Area 1, Ganghuaxing Industrial Park, No. 2 Chongqing Road, Qiaotou Community, Fuhai Street, Bao'an District, Shenzhen