

## P5 Fixed Outdoor LED Panel Display Designed To Withstand Various Weather Conditions

Our Product Introduction

for more products please visit us on [googolled.com](http://googolled.com)

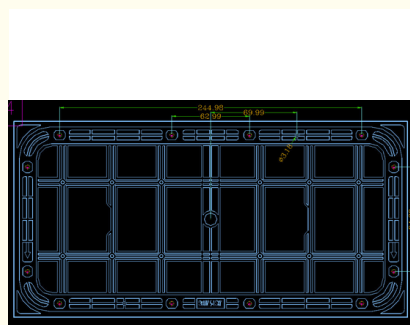
### Basic Information

- Place of Origin: Shenzhen
- Brand Name: Googol
- Certification: CE, FAD, ROHS,
- Model Number: P5



### Product Specification

- Pixel Pitch: 5mm
- Module Weight: ≤400g
- Refresh Frequency: ≥1920Hz
- Drive Mode: 1/8S
- Decoding Mode: D7258
- Luminance: ≥6000cd/m<sup>2</sup>
- Highlight: P5 outdoor led panel display,  
Fixed outdoor led panel display,  
5mm led display outdoor advertising



### More Images



## Product Description

### Outdoor Fixed LED Display Designed to Withstand Various Weather Conditions P5

This outdoor Fixed LED display product has excellent heat dissipation performance, and it can be maintained in the front and back as well. Its all-weather durability and energy efficient design make it an ideal choice for permanent outdoor installations. The display type of this product is Outdoor Fixed LED Display, which means it is specifically designed for outdoor use and can withstand various weather conditions. It is suitable for a wide range of applications, including outdoor advertising, sports events, concerts, and Media Fixed Advertising Screens.

#### Applications:

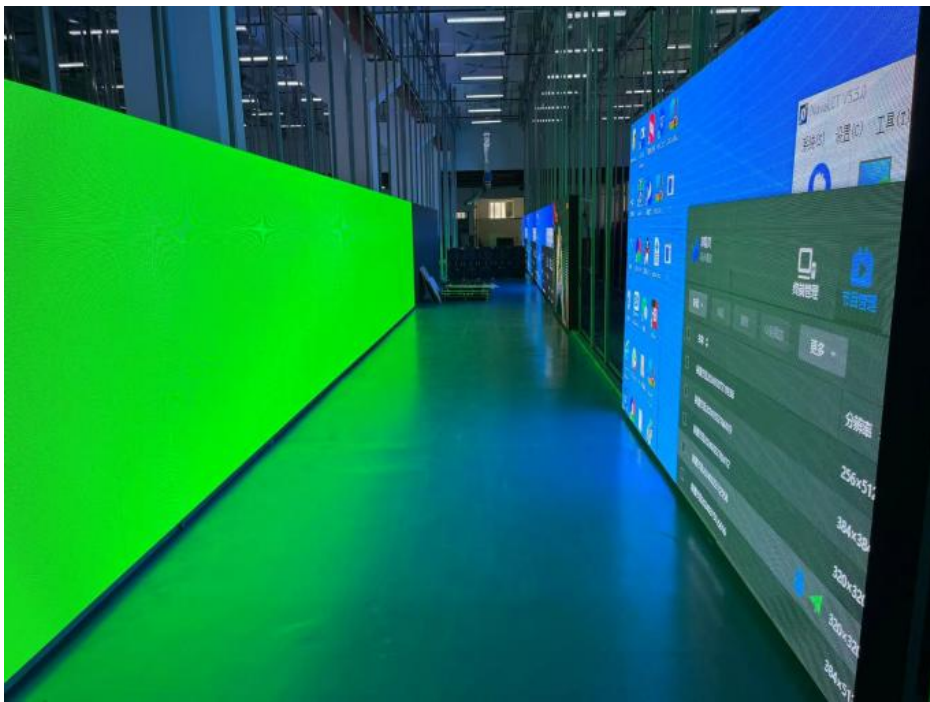
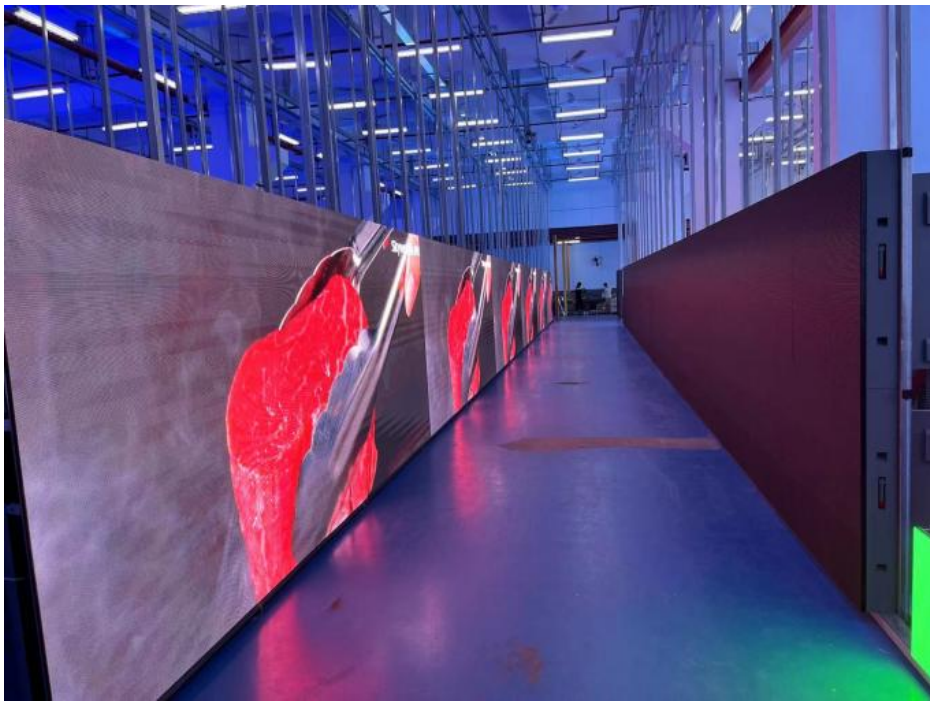
- Outdoor Highway Toll Gate
- Outdoor Advertising Machines
- Media Fixed Advertising Screens

#### Product Features:

- D-PH5 adopts outdoor full color module PCB board, international FR-4 board, and two layer circuit board design with better heat emission system.
- LED lamp beads using Nation Star NationStar, white balance brightness  $\geq 6000$  nit.
- The driver IC adopts ICND2037/SM16208, and the visual refresh frequency is above  $\geq 1920$ Hz.
- Module size 320 \* 160mm, unique design, compared with the market routine, the flatness is better.
- The module adopts blanking circuit design, built-in LED display screen residual elimination circuit (uplink residual) And lamp bead short circuit, open series bright processing circuit (caterpillar processing phenomenon).
- The module size is 320 \* 160MM, compatible with market 640mm \* 640mm, 960 \* 960MM standard box

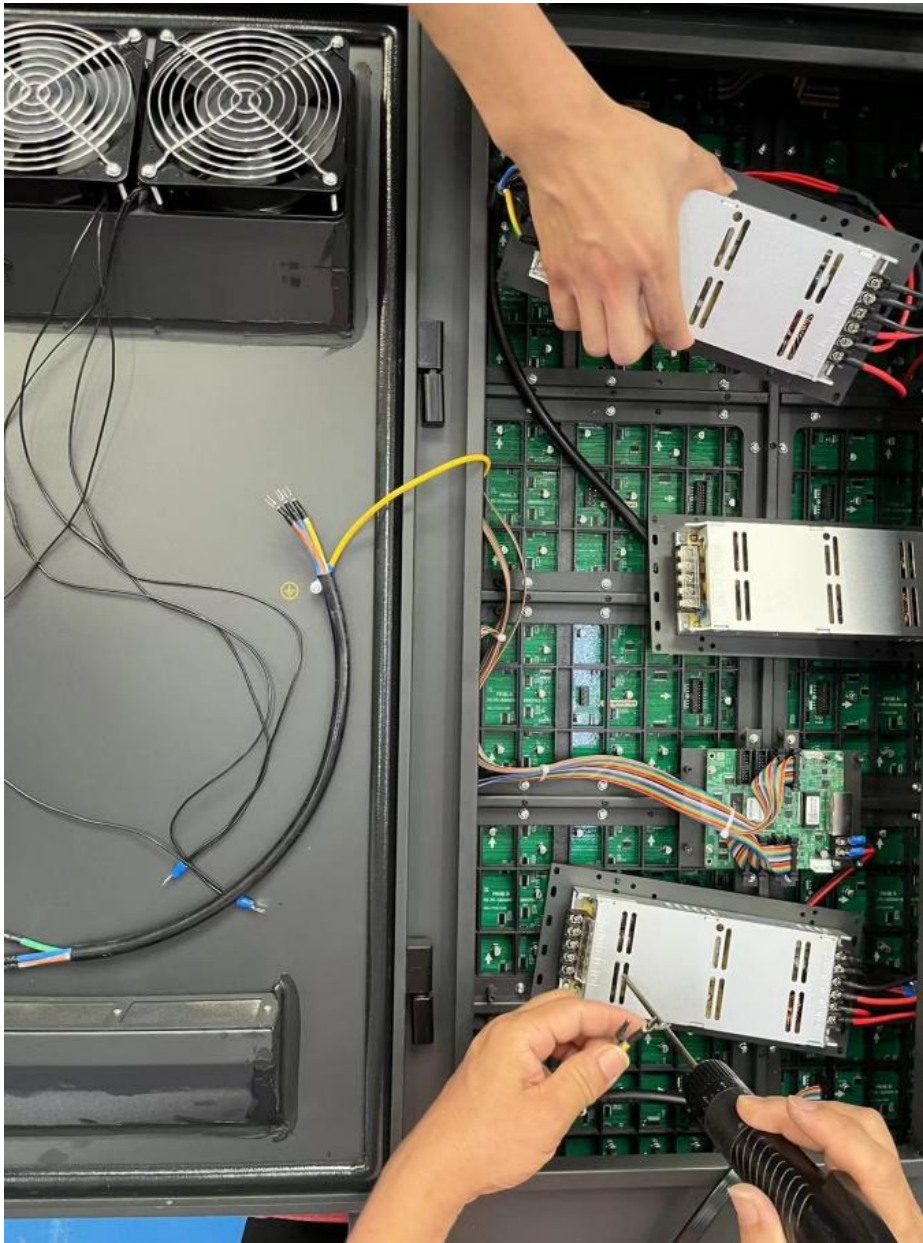
#### Key Parameters:

Part Number	P5	Part Number	P5
Pixel Pitch	5mm	Module Weight	$\leq 400$ g
LED Configuration	SMD 1921	Decoding Mode	D7258
Pixel Density	40000dot/m <sup>2</sup>	Input Voltage(DC)	5V
Module Size	320*160mm	Module Max. Current(Ampere)	$\leq 7.5$ A
Pixel Arrangement	64*32	Module Max. Power Consumption	$\leq 37.5$ W
Drive Mode	1/8S	Operating Temperature	-20°C~+80°C
Luminance	$\geq 6000$ cd/m <sup>2</sup>	Operating Humidity	30%~85%RH
Driver Chip	ICND2037/SM16208	Viewing Angle (H/V)	140°(±10°)
Refresh Frequency	$\geq 1920$ Hz	Viewing Angle (V/V)	120°(±10°)









In conclusion, our Outdoor Fixed LED Display is a highly versatile product that can be used in various applications and scenarios. With its high brightness, energy-saving properties, and customizable design, it is the perfect solution for your advertising needs. Contact us today to get a quote and take your brand visibility to the next level!

#### **Packing and Shipping:**

##### **Outdoor Fixed LED Display Packaging and Shipping**

Our Outdoor Fixed LED Display is carefully packaged to ensure safe delivery to our customers. Packaging.

The display panels are first wrapped in protective foam and then placed in a sturdy wooden crate. The edges of the crate are reinforced with metal corners for added protection during transportation.

Each crate is labeled with the product name, dimensions, and weight for easy identification and handling.

##### **Shipping**

We offer both air and sea shipping options for our customers, depending on their location and preference.

For air shipping, we use reliable and well-known carriers to ensure timely and safe delivery. The display panels are carefully loaded into airtight crates and secured with straps to prevent any movement during transit.

For sea shipping, we use specialized containers specifically designed for transportation of delicate electronic equipment. The containers are equipped with shock absorbers and temperature control to protect the display panels from any damage.

Our team carefully monitors the shipping process to ensure that the products arrive at their destination in perfect condition.

Upon arrival, our customers can choose to have the display panels professionally installed by our team or they can opt for self-installation with our detailed installation guide.

With our careful packaging and reliable shipping options, you can trust that your Outdoor Fixed LED Display will arrive safely and ready to impress.



**Shenzhen Googol Display Technology Co., Ltd**



+8615766165492



jimmy.wenmy@gmail.com



googolled.com

2nd Floor, Building A, Area 1, Ganghuaxing Industrial Park, No. 2 Chongqing Road, Qiaotou Community, Fuhai Street, Bao'an District, Shenzhen