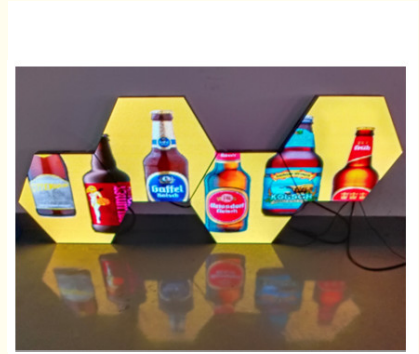


P4 Customized Special Shaped Hexagon LED Screen High Flexibility 14 bit

Our Product Introduction

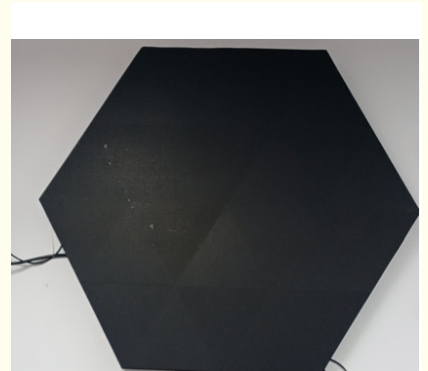
Basic Information

- Place of Origin: Shenzhen, China
- Brand Name: Googol
- Certification: CE, FAD, ROHS
- Model Number: p4



Product Specification

- Pixel Pitch: P4
- Gary Scale: 14 Bit
- LED Configuration: SMD 1515
- Communicarion: Synchronous/ Asynchronous
- Input Voltage(AC): 110~240V, 50~60Hz
- Pixel Density: 62500dot/m2
- Highlight: **P4 hexagon led screen, hexagon led screen High Flexibility, 14 Bit hex led display**



Product Description

Customized Special-shaped LED Display High Flexibility and Good Display Effect p4

Product introduction: Compared with the traditional display screen, hexagon LED Display's biggest feature is that it can better adapt to the overall structure of the building and the environment, and the size of the screen body can be customized according to the requirements.



Product features: Hexagonal LED screen is an innovative display technology, which can be spliced into any shape, suitable for various occasions, such as shopping malls, exhibitions, hotels, conference rooms and so on. The hexagonal LED screen has the following advantages:

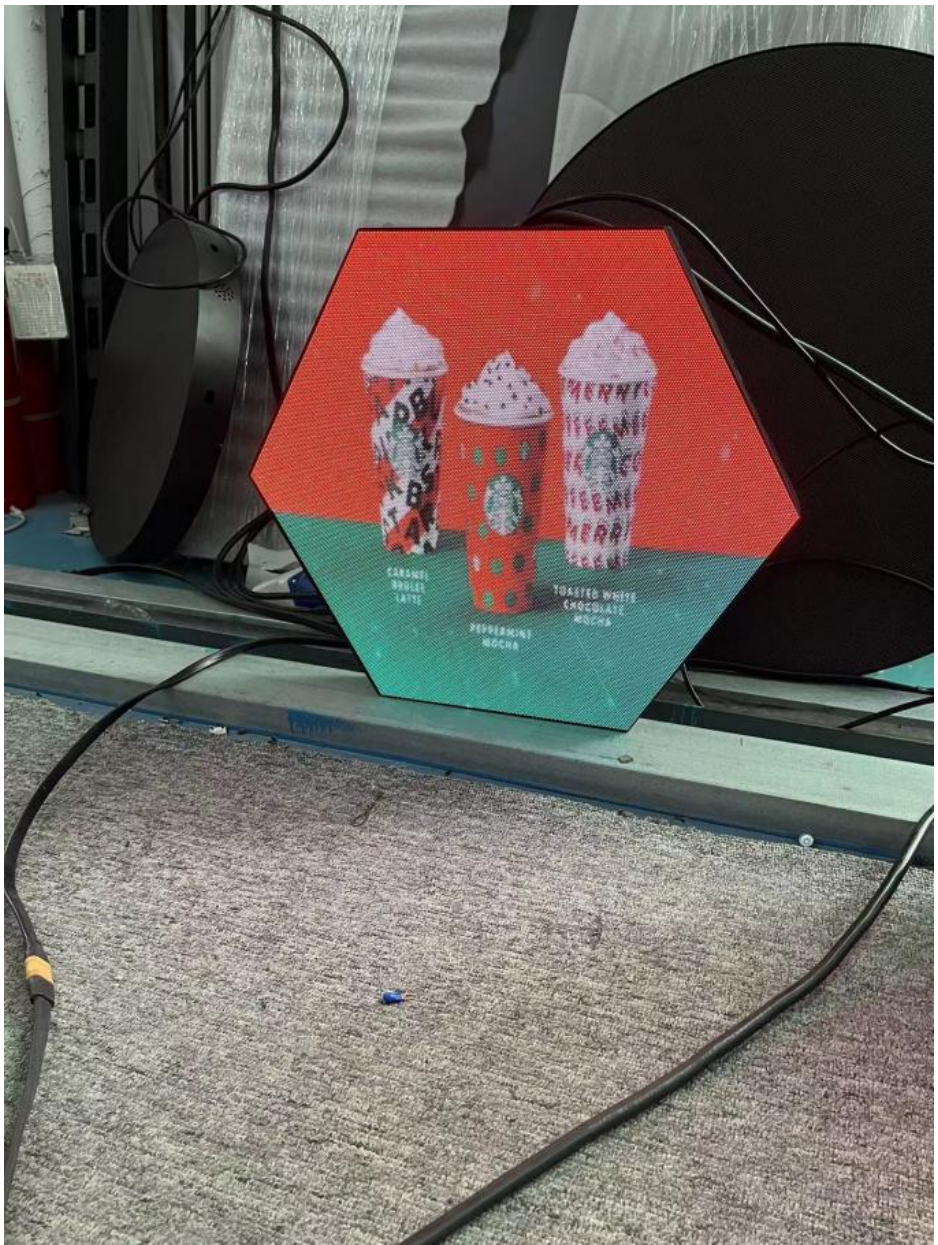
- 1, High flexibility, The hexagonal LED screen can be spliced into different patterns according to needs, such as honeycomb, flowers, stars, etc., to create a unique visual effect
- 2, Good display effect, The hexagonal LED screen adopts HD resolution and high brightness LED lamp beads, showing the picture clearly, bright and smooth, with good viewing angle and color production.
- 3, Energy saving and environmental protection.

The hexagonal LED screen is a creative and futuristic display technology that can provide customers with a diverse and personalized visual experience, enhancing the image and competitiveness of the brand.



Applications: The hexagonal LED screen is a creative and futuristic display technology that can provide customers with a diverse and personalized visual experience, enhancing the image and competitiveness of the brand.

- 1, Shopping mall : using hexagonal LED screens to create attractive windows, billboards, back view walls, etc, to display goods and brand information, attracting customers' attention and interest
- 2, Exhibition hall: using hexagonal LED screens to display various themes and content, such as art, technology, history, etc, to create unique visual effects and enhance the sense of participation and experience of the audience.
- 3, Hotel: The hotel can use the hexagonal LED screen to decorate the lobby, corridor, room, etc, to create a high-end, comfortable, stylish atmosphere, and improve the quality and grade of the hotel.
- 4, Meeting room: The conference room can use the hexagonal LED screen for various presentations, explanations, training, etc, showing clear, smooth and vivid pictures to improve the efficiency and effect of the conference.
- 5, Entertainment places: Entertainment venues can use hexagonal LED screens to create a variety of lighting, music, stage and other effects to create a lively, happy, passionate atmosphere to meet people's entertainment needs.



Key paremeters:

Part Number	P4	Part Number	P4
Pixel Pitch	4mm	Gray Scale	14bit
LED Configuration	SMD 1515	Communicarion	Synchronous/ Asynchronous
Pixel Density	62500dot/m2	Input Voltage(AC)	110~240V , 50~60Hz
Module Size	300*300*300mm	Average Power Consumption	200W/m ²
Pixel Arrangement	150*130/300*260	Max Power Consumption	550W/m ²

Cabinet Weight	4.5kg/8.5kg	Operating Temperature	-20°C~+50°C
Luminance	≥800cd/m ²	Operating Humidity	10%~90%RH
Powersize	5V 40A	Viewing Angle (H/V)	140°(±10°)
Refresh Frequency	≥1920Hz	Viewing Angle (V/V)	140°(±10°)
Cabinet Size	600*520*58mm	Cabinet Size	1200*1039*58mm



Shenzhen Googol Display Technology Co., Ltd



+8615766165492



jimmy.wenmy@gmail.com



googolled.com

2nd Floor, Building A, Area 1, Ganghuaxing Industrial Park, No. 2 Chongqing Road, Qiaotou Community, Fuhai Street, Bao'an District, Shenzhen